

IX-5800 / IX-5810 Optional Equipment Installation

IX-58BTINF Bluetooth Headset Adapter Installation (The IX-5800 does not support the IX-58BTINF)

This unit allows the connection of an IX-5810 Digital Telephone to a Bluetooth headset.

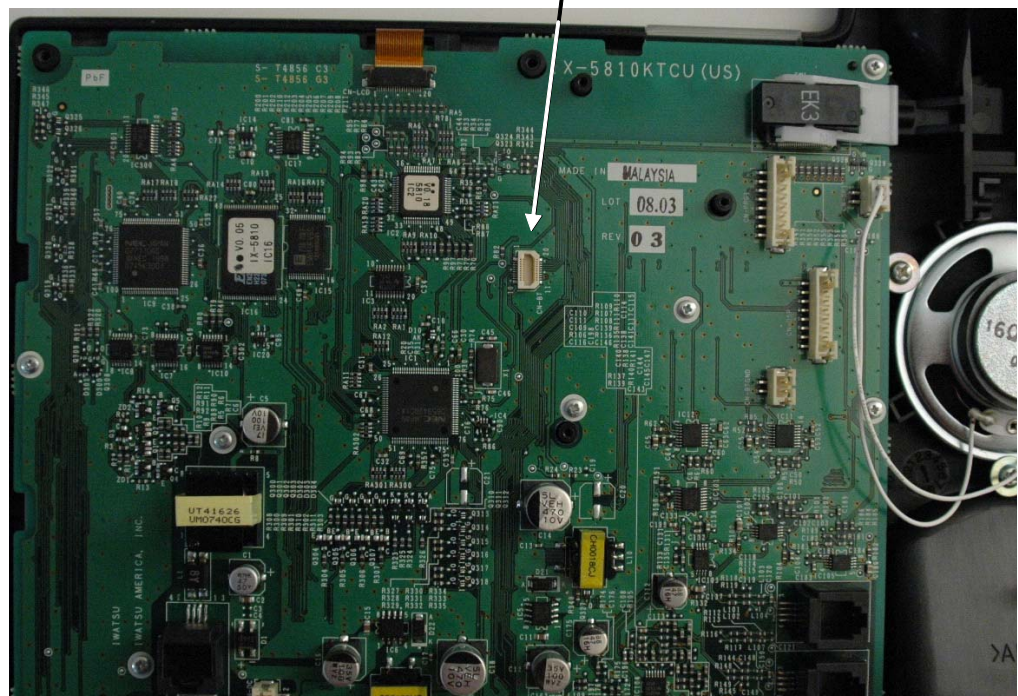
Note:

Attention and / or care should be taken to keep the key telephone with the Bluetooth Module installed at least eight inches from any human contact.

To add an IX-58BTINF unit to an IX-5810 Digital Telephone:

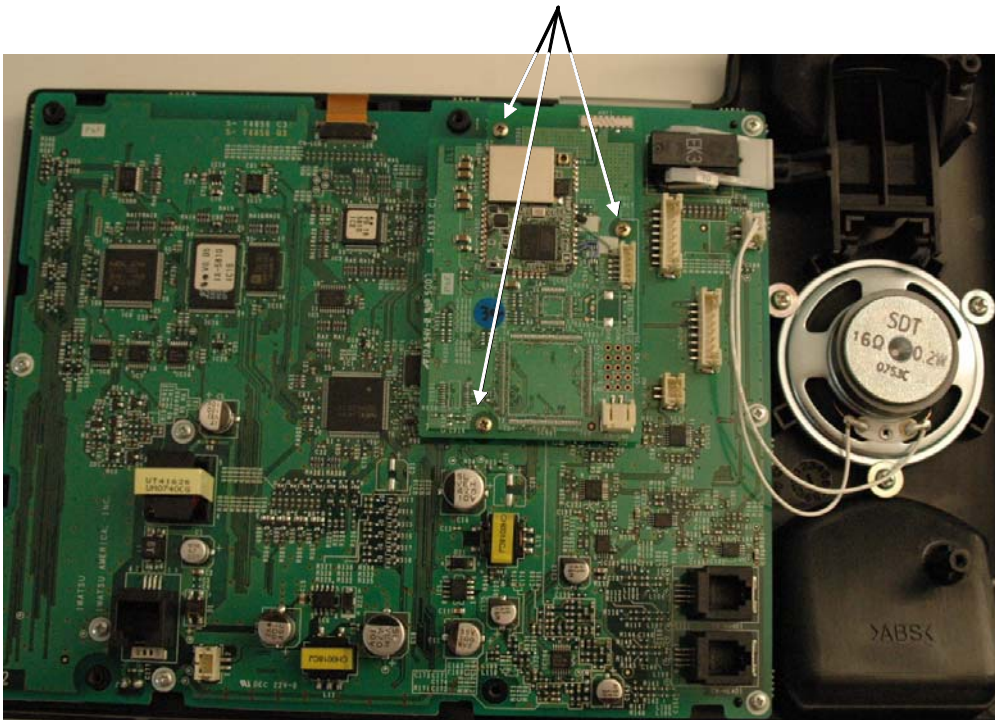
1. Turn the IX-5810 Telephone so that the bottom (pedestal) of the telephone is facing up and disconnect all cords (Headset and Handset).
2. Using a Phillips head screwdriver, remove the six screws from the bottom of the IX-5810 Telephone. Carefully, place the screws aside.
3. With the six screws removed, separate the upper and lower housing from the telephone.

CN-BT Connector



4. Insert the IX-58BTINF CN901 connector into the CN-BT connector on the IX-5810 motherboard (IX-5810KTCU).
5. When the IX-58BTINF board is connected, insert the three retaining screws (provided with the IX-58BTINF) to secure the IX-58BTINF to the IX-5810KTCU motherboard.

IX-58BTINF
Retaining Screws



6. Reattach the top and bottom sections of the telephone using the Phillips head screws set aside from the second step.
7. Reconnect all cords.